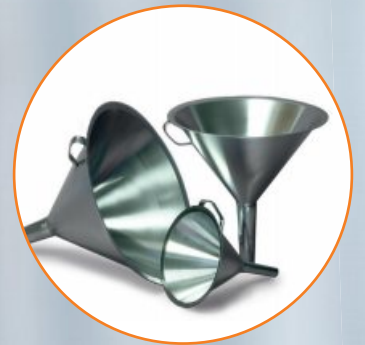



# Stainless Ware

Over one million stock items

Issue: F



Over  
140 New  
Products



## Welcome to the latest edition of our Stainless Ware Brochure

Since our last brochure we have been working hard to bring you an even larger range of high quality stainless steel products. As you look through the brochure you will see that we have introduced many new exciting ranges as well as adding new products to our existing ranges.

We would like to say "Thank You!" to the many customers who have contacted us with requests and ideas for new products. We are always happy to receive customer feedback about any of the products in our range.

We have well over one million items in stock and so we offer same-day-shipping on the vast majority of the products in our range.

If you have any questions please contact our highly trained sales team by telephone, email or webchat.

Jonathan Fenner



Simon Fenner



# QUALITY



EVERY TIME

---

## CONTAINERS With Tri Ferrule Clamped Lids



The Sampling Systems range of Stainless Containers with Tri-Ferrule Lids are a very popular range in the pharmaceutical, chemical and food industries. The high quality finish and 316L stainless steel construction make them ideal for most applications. The Stainless Containers are available in 3 lid sizes (2", 4" and 6").

The Tri-Ferrule lid (BS4825-3) ensures that the containers are both powder-tight and watertight. The Tri-Ferrule system enables the containers to be clamped directly on to other items of processing equipment.

- Multi purpose containers
- 316L stainless steel body and lid
- Robust construction
- Crevice free interior
- Tri-Ferrule style Lids BS 4825-3
- All welds ground and polished
- Complete with lid, silicone gasket (FDA compliant) and clampband
- Leak-proof



## Stainless Containers (2" Lid)

Volume 250ml to 1000ml



Part No.	Nominal Volume	Body Diameter	Height	Lid Size	Material
A836-250	250ml	83mm	97mm	2"	316L ss
A836-500	500ml	83mm	148mm	2"	316L ss
A836-1000	1000ml	102mm	178mm	2"	316L ss

Spares					
K201-2	Spare 2" Silicone Gasket - FDA acceptable grade				
K202-2	Spare 2" EPDM Gasket - FDA acceptable grade				
K203-2	Spare 2" Viton Gasket - FDA acceptable grade				
K204-2	Spare 2" PTFE Gasket - FDA acceptable grade				

## Stainless Containers (4" Lid)

Volume 1L to 30L

New sizes



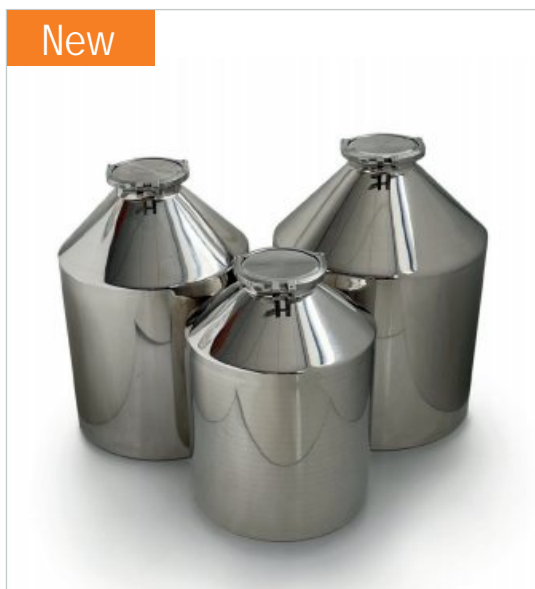
Part No.	Nominal Volume	Body Diameter	Height	Lid Size	Material
A416-1	1L	102mm	152mm	4"	316L ss
A416-2	2L	122mm	228mm	4"	316L ss
A416-5	5L	162mm	313mm	4"	316L ss
A416-8	8L	212mm	283mm	4"	316L ss
A416-10	10L	212mm	363mm	4"	316L ss
A416-15	15L	272mm	361mm	4"	316L ss
A416-20	20L	272mm	443mm	4"	316L ss
A416-25	25L	302mm	460mm	4"	316L ss
A416-30	30L	302mm	602mm	4"	316L ss

Spares					
K201-4	Spare 4" Silicone Gasket - FDA acceptable grade				
K202-4	Spare 4" EPDM Gasket - FDA acceptable grade				
K203-4	Spare 4" Viton Gasket - FDA acceptable grade				
K204-4	Spare 4" PTFE Gasket - FDA acceptable grade				

## Stainless Containers (6" Lid)

Volume 50L to 100L

New



Part No.	Nominal Volume	Body Diameter	Height	Lid Size	Material
A856-50	50L	400mm	550mm	6"	316L ss
A856-75	75L	450mm	650mm	6"	316L ss
A856-100	100L	500mm	670mm	6"	316L ss

Spares					
K201-6	Spare 6" Silicone Gasket - FDA acceptable grade				
K202-6	Spare 6" EPDM Gasket - FDA acceptable grade				
K203-6	Spare 6" Viton Gasket - FDA acceptable grade				
K204-6	Spare 6" PTFE Gasket - FDA acceptable grade				

Our range of GL45 containers have the advantage that the lid can be fully removed for full cleaning. The lid comes with a built in adapter so they will mate with standard GL45 threads.

The containers are available in a variety of sizes and are highly polished as standard.



- Multi purpose containers
- Heavy duty construction
- Crevice free interior
- 316L stainless steel construction
- Lid can be completely removed for full cleaning

External GL45 Thread (with screw on Cap and silicone seal)

Part No.	Nominal Volume	Body Diameter	Height
A417-1	1L	104mm	182mm
A417-2	2L	104mm	257mm
A417-5	5L	164mm	346mm
A417-8	8L	212mm	313mm
A417-10	10L	215mm	394mm
A417-15	15L	275mm	360mm
A417-20	20L	275mm	470mm
A417-30	30L	300mm	600mm



Internal GL45 Thread (not supplied with a Cap)

Part No.	Nominal Volume	Body Diameter	Height
A418-1	1L	104mm	182mm
A418-2	2L	104mm	257mm
A418-5	5L	164mm	346mm
A418-8	8L	212mm	313mm
A418-10	10L	215mm	394mm
A418-15	15L	275mm	360mm
A418-20	20L	275mm	470mm
A418-30	30L	300mm	600mm



See Page 5 for spare 4" seals

## Clamp Containers (316L ss)

Volume 1L to 30L

New sizes



- Multi purpose containers
- 316L stainless steel
- Crevice free interior
- Supplied with lid, clamp and silicone seal (FDA acceptable grade)
- Wide 4" (100mm) diameter tri-clamp lid BS 4825-3
- Satin finish
- Side handles (excluding 1 and 2 litre sizes)
- Neck has a 60° angle to promote powder discharge

Part No.	Nominal Volume	Diameter	Height	Material
A566-01	1L	133mm	109mm	316L ss
A566-02	2L	130mm	185mm	316L ss
A566-05	5L	180mm	262mm	316L ss
A566-10	10L	210mm	366mm	316L ss
A566-20	20L	303mm	463mm	316L ss
A566-25	25L	303mm	535mm	316L ss
A566-30	30L	303mm	602mm	316L ss

See Page 5 for spare 4" seals

## PharmaBottles® (316L ss)

Volume 500ml to 1000ml

Stainless PharmaBottles® are ideal for use with powders and liquids. Each container has a high polish finish and a watertight screw on lid.

Stainless PharmaBottles® are supplied with an FDA acceptable silicone gasket in the lid.

- Multi purpose containers
- 316L stainless steel body and lid
- Robust construction
- Crevice free interior
- All welds ground and polished
- Complete with screw on lid
- Silicone (FDA acceptable) gasket in lid



Part No.	Nominal Volume	Internal Neck Diameter	Body Diameter	Height	Material
A846-500	500ml	48mm	83mm	154mm	316L ss
A846-1000	1000ml	48mm	102mm	178mm	316L ss

## Stainless Beakers (316Lss)

Volume 200ml to 3000ml



Our range of stainless steel beakers are made from high grade 316L stainless steel. They have a highly polished finish which makes them ideal for use in the laboratory or production environment. These multi-purpose stainless steel beakers are ideal for the collection and storage of powders and liquids.

- Multi purpose containers
- 316L stainless steel
- Crevice free interior
- Available from stock
- Polished finish



Part No.	Nominal Volume	Internal Diameter	Height	Material
A736-200	200ml	72mm	60mm	316L ss
A736-500	500ml	82mm	100mm	316L ss
A736-1000	1000ml	99mm	150mm	316L ss
A736-2000	2000ml	140mm	155mm	316L ss
A736-3000	3000ml	203mm	100mm	316L ss

## Pots with Lids

Volume 400ml to 5000ml



- 304 stainless steel
- Crevice free
- Simple drop on lid
- Satin finish

Part No.	Nominal Volume	Top Diameter	Height	Material
A284-400	400ml	85mm	85mm	304 ss
A284-650	650ml	100mm	100mm	304 ss
A284-1250	1250ml	120mm	120mm	304 ss
A284-2500	2500ml	150mm	150mm	304 ss
A284-5000	5000ml	200mm	200mm	304 ss

## Jacketed Vessels (316Lss)

Volume 3L to 50L



Jacketed Vessels are perfect for controlling the temperature of the product. A warming or cooling liquid can be passed through the jacket. The containers have a tri-ferrule lid.

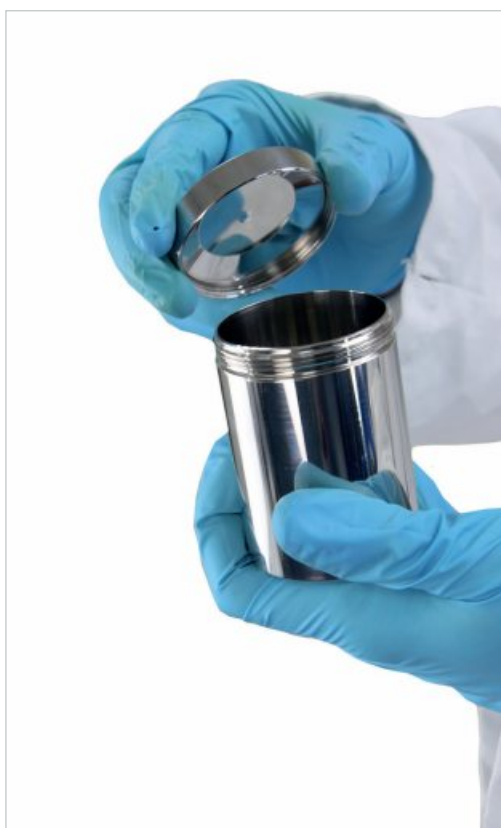
- 316L stainless steel body & lid
- Silicone Gasket (FDA acceptable)
- 2 x 1" ferrules on the side (BS4825-3)

Part No.	Nominal Volume	Lid Size	Height	Material
A746-3	3L	4"	207mm	316L ss
A746-5	5L	4"	313mm	316L ss
A746-10	10L	4"	363mm	316L ss
A746-15	15L	4"	361mm	316L ss
A746-25	25L	4"	533mm	316L ss
A746-50	50L	6 5/8"	550mm	316L ss



## Mini-Pots (316L ss)

Volume 7ml to 1000ml



Mini-Pots are a range of high quality screw top containers that are made from 316L stainless steel. Mini-Pots have a crevice free interior and widely used in pharmaceutical and chemical laboratories around the world.

Available in a wide range of sizes.

- Screw on lid
- Bright Polish
- Multi purpose small volume containers
- 316L stainless steel
- Crevice free interior
- O-ring available for improved sealing

Part No.	Nominal Volume	Lid Diameter	Overall Height	Material
A426-7	7ml	19mm	45mm	316L ss
A426-25	25ml	41mm	36mm	316L ss
A426-50	50ml	53mm	42mm	316L ss
A426-100	100ml	52mm	73mm	316L ss
A426-250	250ml	77mm	73mm	316L ss
A426-500	500ml	102mm	78mm	316L ss
A426-750	750ml	102mm	116mm	316L ss
A426-1000	1000ml	102mm	154mm	316L ss



Part No.	Suit Nominal Volume	Material
A426-25S	O-ring for 25ml (A426-25)	Silicone
A426-50S	O-ring for 50ml (A426-50)	Silicone
A426-100S	O-ring for 100ml (A426-100)	Silicone
A426-250S	O-ring for 250ml (A426-250)	Silicone
A426-500S	O-ring for 500ml (A426-500)	Silicone
A426-750S	O-ring for 1000ml (A426-750)	Silicone
A426-1000S	O-ring for 50ml (A426-1000)	Silicone

Mini-Pots can be fitted with a silicone O ring. This makes the sealing more robust. The silicone is FDA compliant to 21 CFR 177.2600.

New sizes



The Sampling Systems range of heavy duty toggle drums are ideal for storage and production. Each Toggle Drum is supplied with a fully welded handle, silicone seal (FDA grade) and lid. The lid is secured by using the pull down latches (toggle clamps). They are manufactured from high grade 316L stainless steel which makes the containers suitable for most applications.

The toggle drums have a high quality, polished finish which aids complete and thorough cleaning. Large stocks are kept for quick delivery.

- Multi purpose open top drums
- Heavy duty construction
- Crevice free interior
- 316L stainless steel body and lid
- Silicone gasket (food grade, FDA acceptable)
- Lid can be completely removed for full cleaning

Part No.	Nominal Volume	Number of Toggles	Internal Diameter	Nominal Height	Material (Body & Lid)	Lid Gasket
A926-2	2L	2	140mm	160mm	316L ss	Silicone - FDA acceptable
A926-5	5L	4	196mm	200mm	316L ss	Silicone - FDA acceptable
A926-8	8L	4	196mm	300mm	316L ss	Silicone - FDA acceptable
A926-10	10L	4	230mm	270mm	316L ss	Silicone - FDA acceptable
A926-15	15L	4	230mm	380mm	316L ss	Silicone - FDA acceptable
A926-20	20L	4	300mm	300mm	316L ss	Silicone - FDA acceptable
A926-25	25L	4	300mm	380mm	316L ss	Silicone - FDA acceptable
A926-30	30L	4	300mm	450mm	316L ss	Silicone - FDA acceptable
A926-50	50L	4	395mm	430mm	316L ss	Silicone - FDA acceptable
A926-100	100L	6	470mm	610mm	316L ss	Silicone - FDA acceptable
A926-200	200L	6	570mm	800mm	316L ss	Silicone - FDA acceptable
A926-300	300L	6	710mm	800mm	316L ss	Silicone - FDA acceptable

New  
sizes



Stainless Storage Drums are a range of high quality, open top stainless steel drums. These drums have a highly polished finish and are supplied with sturdy side handles, lid, gasket and clampband.

The robust, hygienic design means they are suitable for the most demanding of applications.

- Open top pharmaceutical and chemical grade drums with lids
- From 5L to 200L (larger sizes on request)
- High quality, heavy duty construction
- Product contact parts 316L stainless steel
- Crevice free interior
- Lid secured with clampband (304 stainless steel)
- Lid gasket - FDA acceptable silicone rubber
- Hygienic top rim
- Supplied with side handles
- Fully welded GMP correct construction

Part No.	Nominal Volume	Internal Diameter	Nominal Height	Material (Body & Lid)	Lid Gasket
A126-01	1L	140mm	90mm	316L ss	Silicone - FDA acceptable
A126-02	2L	140mm	160mm	316L ss	Silicone - FDA acceptable
A126-03	3L	178mm	150mm	316L ss	Silicone - FDA acceptable
A126-05	5L	196mm	200mm	316L ss	Silicone - FDA acceptable
A126-10	10L	230mm	270mm	316L ss	Silicone - FDA acceptable
A126-15	15L	230mm	380mm	316L ss	Silicone - FDA acceptable
A126-20	20L	300mm	300mm	316L ss	Silicone - FDA acceptable
A126-25	25L	300mm	380mm	316L ss	Silicone - FDA acceptable
A126-30	30L	300mm	450mm	316L ss	Silicone - FDA acceptable
A126-50	50L	394mm	430mm	316L ss	Silicone - FDA acceptable
A126-75	75L	394mm	630mm	316L ss	Silicone - FDA acceptable
A126-100	100L	470mm	610mm	316L ss	Silicone - FDA acceptable
A126-150	150L	570mm	610mm	316L ss	Silicone - FDA acceptable
A126-200	200L	570mm	800mm	316L ss	Silicone - FDA acceptable

Draining Drums (316L ss)

Volume 5L to 200L



Draining Drums are ideal for use with liquids and suspensions. The addition of a 1" ferrule close to the bottom of the drum makes it easy to discharge almost all the contents of the drum.

Valve Kits are available to control the flow of the liquid.

- 316L stainless steel body & lid
- 1" Ferrule welded to side (BS4825-3)
- Available from stock



15L Drum with optional Valve Kit and 90° Bend



Valve Kit



90° Bend  
(fits to valve in place of 1" ferrule)

Part No.	Nominal Volume	Internal Diameter	Nominal Height	Ferrule Size	Material (Body & Lid)	Lid Gasket
A196-05	5L	196mm	200mm	1"	316L ss	Silicone - FDA acceptable
A196-10	10L	230mm	270mm	1"	316L ss	Silicone - FDA acceptable
A196-15	15L	230mm	380mm	1"	316L ss	Silicone - FDA acceptable
A196-20	20L	300mm	310mm	1"	316L ss	Silicone - FDA acceptable
A196-25	25L	300mm	380mm	1"	316L ss	Silicone - FDA acceptable
A196-30	30L	300mm	450mm	1"	316L ss	Silicone - FDA acceptable
A196-50	50L	394mm	431mm	1"	316L ss	Silicone - FDA acceptable
A196-75	75L	394mm	630mm	1"	316L ss	Silicone - FDA acceptable
A196-100	100L	470mm	610mm	1"	316L ss	Silicone - FDA acceptable
A196-150	150L	570mm	610mm	1"	316L ss	Silicone - FDA acceptable
A196-200	200L	570mm	800mm	1"	316L ss	Silicone - FDA acceptable

Options

A136-01S	Valve Kit - Silicone	Kit Includes: 1 x Butterfly Valve 1" with Silicone Seals 1 x Ferrule 1" 2 x EPDM Gasket 1" 2 x Clamp 1"
A136-01A	Valve Kit - EPDM	Kit Includes: 1 x Butterfly Valve 1" with EPDM Seals 1 x Ferrule 1" 2 x EPDM Gasket 1" 2 x Clamp 1"
A136-10B	90° Bend	Made from 316L stainless steel

Contact us if you need a drum with complete discharge

## Tight Head Drums (316L ss)

Volume 10L to 200L

New



Tight Head Drums are perfect for the storage and processing of food products and chemicals. They are made from 316L stainless steel and are commonly used in chemical, pharmaceutical and cosmetic manufacturing. These drums are available in a wide range of sizes from stock with the 200L size (45 UK gallon/55 US gallon) being the most popular.

Tight Head Drums are fitted with a 2" and 3/4" tri sure bung. There is also an EPDM seal (FDA 177.2600). The drums have swaged sides for added strength when being handled. Please see our trolley range if you want to move the drums.

- 316L stainless steel
- 2" Bung and 3/4" Bungs
- EPDM seal on Bungs
- Available from stock



Part No.	Nominal Volume	Diameter	Height	Material
A266-10	10L	260mm	255mm	316L ss
A266-20	20L	289mm	401mm	316L ss
A266-50	50L	362mm	568mm	316L ss
A266-100	100L	458mm	700mm	316L ss
A266-200	200L	581mm	886mm	316L ss

## Trolley

Stainless steel Drum Trolleys are ideal for moving drums and equipment around the factory. The trolleys have a robust stainless steel frame and four non-marking wheels.

- 304 stainless steel frame
- Includes 4 castors (2 lockable)
- Available from stock for fast delivery

Part No.	Max Diameter Drum	Deck Height
A384-320	320mm	135mm
A384-420	420mm	135mm
A384-500	500mm	135mm
A384-600	600mm	135mm
A384-740	740mm	160mm



## Mini-Drums (304 & 316L ss)

Volume 1 L to 15 L

- Multi purpose containers
- Crevice free interior
- Neat recessed fitting lid
- Complete with a swing carrying handle



### Toggle Clamps

To secure the lid we recommend the use of toggle clamps.

3 toggle clamps per Mini-Drum are used.



### O-Ring Seals

- Silicone seal
- FDA grade
- Prices on request

O-rings are also available in Viton and Nitrile - ask for details

## Mini-Drums Without Toggle Clamps

Nominal Volume	Height	Diameter	304 stainless steel	316L stainless steel
			Part No.	Part No.
1L	155mm	100mm	A434-1	A446-1
2L	175mm	130mm	A434-2	A446-2
3L	185mm	155mm	A434-3	A446-3
5L	240mm	175mm	A434-5	A446-5
6L	280mm	175mm	A434-6	A446-6
8L	285mm	200mm	A434-8	A446-8
10L	295mm	220mm	A434-10	A446-10
12.5L	285mm	237mm	A434-12	A446-12
15L	285mm	267mm	A434-15	A446-15

## Mini-Drums With Toggle Clamps and Silicone Seal

Nominal Volume	Height	Diameter	304 stainless steel	316L stainless steel
			Part No.	Part No.
1L	155mm	100mm	A624-1	A626-1
2L	175mm	130mm	A624-2	A626-2
3L	185mm	155mm	A624-3	A626-3
5L	240mm	175mm	A624-5	A626-5
6L	280mm	175mm	A624-6	A626-6
8L	285mm	200mm	A624-8	A626-8
10L	295mm	220mm	A624-10	A626-10
12.5L	285mm	237mm	A624-12	A626-12
15L	285mm	267mm	A624-15	A626-15

## Storage Containers (304 & 316L ss)

Volume 20L to 100L

- Multi purpose containers
- Light duty construction
- Crevice free interior
- Two sturdy handles
- Close fitting recessed lid with handle
- Flat bottom with chime ring to give added protection
- Toggle Clamps and seals are optional extras



### Toggle Clamps

Toggle Clamps are used to securely hold the lid. For 20L to 100L containers 4 toggle clamps are used.



## Storage Containers Without Toggle Clamps

Nominal Volume	Height	Diameter	304 stainless steel	316L stainless steel
			Part No.	Part No.
20L	390mm	265mm	A454-20	A466-20
25L	390mm	300mm	A454-25	A466-25
30L	455mm	300mm	A454-30	A466-30
50L	560mm	350mm	A454-50	A466-50
75L	625mm	400mm	A454-75	A466-75
100L	675mm	445mm	A454-100	A466-100

## Storage Containers With Toggle Clamps and Silicone Seal

Nominal Volume	Height	Diameter	304 stainless steel	316L stainless steel
			Part No.	Part No.
20L	390mm	265mm	A694-20	A696-20
25L	390mm	300mm	A694-25	A696-25
30L	455mm	300mm	A694-30	A696-30
50L	560mm	350mm	A694-50	A696-50
75L	625mm	400mm	A694-75	A696-75
100L	675mm	445mm	A694-100	A696-100

## 316 Stainless Jugs (316Lss)

Volume 500ml to 5000ml



New

The 316 Stainless Steel Jugs are very robust and have a heavy duty design. These GMP correct jugs have straight sides, a pouring lip and a fully welded handle.

Each jug is highly polished and has a crevice-free interior. Graduation marks are etched onto the interior wall.

Part No.	Nominal Volume	Graduated	Diameter	Height	Material
A406-500	500ml	Yes	87mm	122mm	316L ss
A406-1000	1000ml	Yes	105mm	161mm	316L ss
A406-2000	2000ml	Yes	150mm	171mm	316L ss
A406-3000	3000ml	Yes	147mm	223mm	316L ss
A406-5000	5000ml	Yes	175mm	245mm	316L ss

## Stainless Jugs

Volume 500ml to 5000ml



- Straight sided jugs with side handles
- 304 stainless steel construction
- Most sizes are graduated

Part No.	Nominal Volume	Graduated	Top Diameter	Height	Material
A204-500	500ml	Yes	75mm	135mm	304 ss
A204-1000	1000ml	Yes	100mm	135mm	304 ss
A204-2000	2000ml	Yes	135mm	170mm	304 ss
A204-3000	3000ml	No	120mm	230mm	304 ss
A204-5000	5000ml	No	140mm	265mm	304 ss

## Conical Jugs

Volume 500ml to 2000ml



- Made from 304 stainless steel
- Crevice free design
- Polished finish
- Graduated

Part No.	Nominal Volume	Graduated	Top Diameter	Height	Material
A154-500	500ml	Yes	115mm	115mm	304 ss
A154-1000	1000ml	Yes	150mm	140mm	304 ss
A154-2000	2000ml	Yes	171mm	200mm	304 ss

No Cleaning - No Cleaning Validation - Save money

**SteriWare®**



Many items in this range are available in disposable, single use format. For further information please contact us or visit [www.sampling.com](http://www.sampling.com)



## Buckets (316Lss)

Volume 10L to 15L

New



- Made from 316L stainless steel
- Crevice free interior
- Swing handle
- Flat base
- Non graduated

Part No.	Nominal Volume	Top Diameter	Height	Material
A586-10	10L	300mm	233mm	316L ss
A586-12	12L	310mm	262mm	316L ss
A586-15	15L	330mm	305mm	316L ss

### Lids

Suitable for use with A586 buckets only

Part No.	To suit Bucket Volume	Material
A586-10L	10L	316L ss
A586-12L	12L	316L ss
A586-15L	15L	316L ss

## Buckets (316Lss)

Volume 12L

New



- Crevice free interior
- Graduated
- Supplied with skirt band
- Robust design
- 316L stainless steel

Part No.	Nominal Volume	Top Diameter	Height	Material
A826-12	12L	310mm	285mm	316L ss

## Buckets

Volume 6L to 15L



- Crevice free interior
- Graduated
- Supplied with skirt band
- Robust design
- 304 stainless steel

Part No.	Nominal Volume	Top Diameter	Height	Material
A264-6	6L	280mm	190mm	304 ss
A264-10	10L	300mm	295mm	304 ss
A264-12	12.5L	330mm	315mm	304 ss
A264-15	15L	350mm	360mm	304 ss

## Bucket with Spout (316Lss)

Volume 15L to 20L

New



- Bucket with pouring spout
- Made from 316L stainless steel
- Crevice free interior
- Non graduated
- Swing handle
- Supplied with skirt band

Part No.	Nominal Volume	Overall Diameter	Height	Material
A686-15	15L	310mm	333mm	316L ss
A686-20	20L	330mm	387mm	316L ss

## Funnels Disposable & reusable



### Powder Funnels (316Lss)

New sizes



Powder Funnels are made from 316L stainless steel and have excellent chemical resistance. The funnels all have steeply angled sides and wide diameter outlets to encourage powder flow.

Powder Funnels have a Tri-Ferrule flange (BS4825-3) at the outlet.

- 316L stainless steel
- Crevice Free Interior
- Highly polished finish
- Tri ferrule fitting at spout base (BS4825-3)

Part No.	Top Diameter	Spout Diameter	Height	Size of Tri-ferrule	Material
A716-100	100mm	35mm	107mm	1.5"	316L ss
A716-200	200mm	35mm	232mm	1.5"	316L ss
A716-300	300mm	50mm	310mm	2"	316L ss
A716-400-2	400mm	50mm	396mm	2"	316L ss
A716-400-4	400mm	100mm	352mm	4"	316L ss

### Disposable Powder Funnel



- Made from FDA and EU conforming polymers
- Individually bagged
- Packed in a Cleanroom
- Full batch traceability
- Available sterile and non-sterile

Part No.	Top Diameter	Spout Diameter	Sterile	Material	Box Quantity
8111H-200	200mm	40mm	No	HDPE	10
8111H-200S	200mm	40mm	Yes	HDPE	10
8111P-350	350mm	52mm	No	PP	8
8111P-350S	350mm	52mm	Yes	PP	8

## Liquid Funnel (316Lss)

**New**

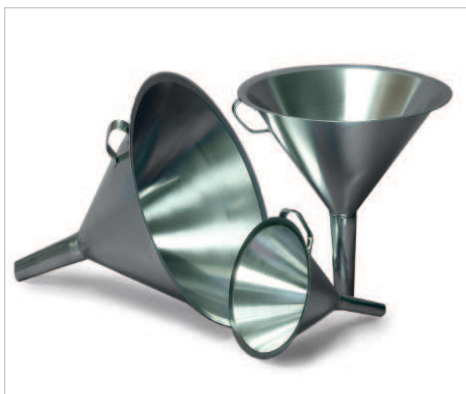


- 316L stainless steel
- Satin finish
- Fluted spout to aid product discharge

Part No.	Top Diameter	Spout Diameter	Height	Material
A986-150	150mm	20mm	171mm	316L ss

Note: We do not recommend these funnels for GMP pharmaceutical use.

## Liquid Funnels



- 304 stainless steel
- Satin finish
- Fluted spout to aid product discharge

Part No.	Top Diameter	Spout Diameter	Height	Material
A244-50*	50mm	8mm*	65mm	304ss
A244-100	100mm	12mm	120mm	304ss
A244-120	120mm	12mm	140mm	304ss
A244-150	150mm	12mm	160mm	304ss
A244-200	200mm	20mm	200mm	304ss
A244-250	250mm	20mm	325mm	304ss
A244-310	310mm	20mm	325mm	304ss

\* A244-50 does not have a fluted spout.

## SteriWare Liquid Funnel

- Single use, disposable liquid funnel
- Moulded & Packed in a Cleanroom
- Individually Bagged
- FDA & EU 10/2011 Conforming Materials
- BSE/TSE Free
- Full Batch Traceability
- Available Sterile (gamma irradiated)



Part No.	Top Diameter	Spout Diameter	Colour	Sterile	Material	Box Quantity
8370H-50	50mm	8mm	Natural	No	HDPE	100
8370H-50S	50mm	8mm	Natural	Yes	HDPE	100
8370H-100	100mm	11mm	Natural	No	HDPE	50
8370H-100S	100mm	11mm	Natural	Yes	HDPE	50
8370H-200	200mm	19mm	Natural	No	HDPE	10
8370H-200S	200mm	19mm	Natural	Yes	HDPE	10
8370B-100	100mm	11mm	Blue	No	PP	50
8370B-100S	100mm	11mm	Blue	Yes	PP	50

## Industrial Funnel with Straight Spout.

New



Industrial Funnels are made from 304 stainless steel and are available in a wide range of sizes. They are ideal for heavy duty use in pharmaceutical, chemical and food companies. The funnels have a satin polish making them easy to clean in line with GMP guidelines.

- 304 stainless steel
- Polished

Part No.	Top Diameter	Outlet Diameter	Material
A164-60	60mm	12mm	304 ss
A164-110	110mm	16mm	304 ss
A164-150	150mm	22mm	304 ss
A164-180	180mm	22mm	304 ss

## Funnel With Strainer

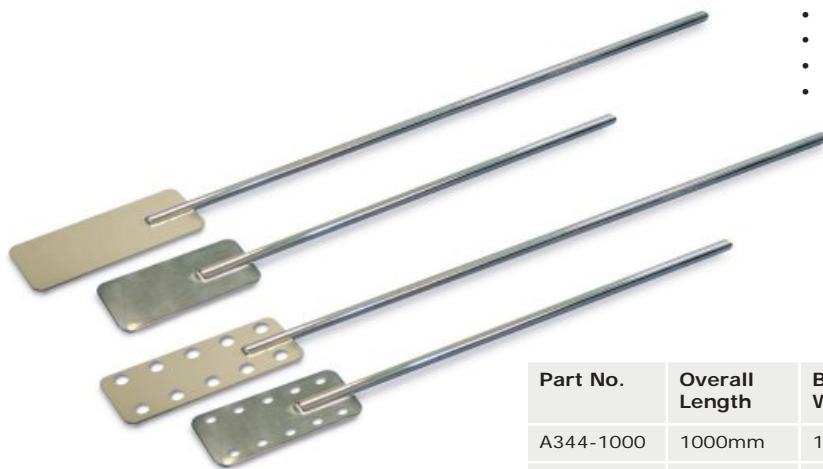


Funnels with Strainer are ideal for removing large particles.

- 304 stainless steel
- Polished

Part No.	Top Diameter	Height	Hole Size	Material
A904-165	165mm	165mm	4mm	304 ss

## Stirring Paddles (316Lss)



- 316L stainless steel
- Crevice free construction
- Bright Polish
- Available with holes for improved stirring

Part No.	Overall Length	Blade Width	Blade Length	Blade Type	Material
A344-1000	1000mm	125mm	240mm	Plain	316L ss
A344-1500	1500mm	150mm	300mm	Plain	316L ss
A916-1000	1000mm	125mm	240mm	With Holes	316L ss
A916-1500	1500mm	150mm	300mm	With Holes	316L ss

## Stainless Dipper (316Lss)

Volume 50ml to 500ml

New sizes



- 316L stainless steel construction
- Fully welded
- Bright Polish

Part No.	Nominal Volume	Overall Length	Outside Cup Diameter	Material
5005A-50	50ml	600mm	32mm	316L ss
5005A-100	100ml	600mm	39mm	316L ss
5005A-250	250ml	600mm	64mm	316L ss
5005A-500	500ml	600mm	90mm	316L ss
5005B-50	50ml	1000mm	32mm	316L ss
5005B-100	100ml	1000mm	39mm	316L ss
5005B-250	250ml	1000mm	64mm	316L ss
5005B-500	500ml	1000mm	90mm	316L ss
5005C-50	50ml	1500mm	32mm	316L ss
5005C-100	100ml	1500mm	39mm	316L ss
5005C-250	250ml	1500mm	64mm	316L ss
5005C-500	500ml	1500mm	90mm	316L ss

## Stainless Ladle (304 or 316Lss)

Volume 50ml to 200ml

New sizes



- Bright Polish
- 304 or 316L stainless steel
- Crevice free construction

Part No.	Nominal Volume	Bowl Diameter	Handle Length	Material
A326-50	50ml	62mm	300mm	316L ss
A326-150	150ml	88mm	325mm	316L ss
A324-50	50ml	62mm	215mm	304 ss
A324-120	120ml	82mm	270mm	304 ss
A324-150	150ml	92mm	270mm	304 ss
A324-200	200ml	101mm	270mm	304 ss

## In Stream Sampler (316Lss)

Volume 500ml



The In Stream Sampler is made from robust 316L stainless steel. It can be used for sampling both powders and liquids.

- Multi purpose sampler
- 316L stainless steel
- Crevice free interior
- Available from stock
- Polished finish

Part No.	Nominal Volume	Internal Diameter	Handle Length	Material
A996-500	500ml	80mm	1000mm	316L ss



## Pallet Knives and Scrapers



### SteriWare Pallet Knife



- Moulded & Packed in a Cleanroom
- Individually Bagged
- FDA, EC 1935/2004 & EU 10/2011 Conforming Materials
- BSE/TSE Free
- Full Batch Traceability
- Available Sterile (gamma irradiated)

Part No.	Blade Length	Blade Width	Overall Length	Pre-Sterilised	Material	Box Quantity
8175H-150	150mm	40mm	260mm	No	HDPE	100
8175H-150S	150mm	40mm	260mm	Yes	HDPE	100
8175H-200	200mm	45mm	300mm	No	HDPE	100
8175H-200S	200mm	45mm	300mm	Yes	HDPE	100

### Disposable Scraper



- Moulded & Packed in a Cleanroom
- Individually Bagged
- FDA, EC 1935/2004 & EU 10/2011 Conforming Materials
- BSE/TSE Free
- Full Batch Traceability
- Available Sterile (gamma irradiated)



Part No.	Blade Length	Blade Width	Overall Length	Sterile	Material	Box Quantity
8785H-75	75mm	75mm	190mm	No	HDPE	100
8785H-75S	75mm	75mm	190mm	Yes	HDPE	100
8785B-75	75mm	75mm	190mm	No	Blue PP	100
8785B-75S	75mm	75mm	190mm	Yes	Blue PP	100
8785H-110	110mm	110mm	225mm	No	HDPE	100
8785H-110S	110mm	110mm	225mm	Yes	HDPE	100

## Pallet Knives



- Crevice free, all stainless steel construction
- Satin finish

Part No.	Blade Length	Blade Width	Overall Length
A330-100	100mm	25mm	185mm
A330-130	130mm	20mm	225mm
A330-150	150mm	25mm	255mm
A330-200	200mm	32mm	325mm
A330-250	250mm	38mm	380mm
A330-300	300mm	45mm	440mm
A330-350	350mm	50mm	495mm

## Pallet Knife with Plastic Handle



- Stainless steel blade with plastic handle
- Satin finish

Part No.	Blade Length	Blade Width	Overall Length
A200-100	100mm	20mm	190mm
A200-200	200mm	30mm	310mm
A200-300	300mm	35mm	415mm

## Pallet Knife with Wooden Handle



- Stainless steel blade with wooden handle
- Satin finish

Part No.	Blade Length	Blade Width	Overall Length
A201-100	100mm	20mm	190mm
A201-150	150mm	23mm	252mm
A201-200	200mm	30mm	310mm
A201-300	300mm	35mm	415mm

## Stainless Steel Scrapers (420 and 316L ss)



- Crevice free, stainless steel construction
- Satin finish

Part No.	Blade Width	Overall Length	Material
A350-75	75mm	232mm	420 ss
A350-100	100mm	277mm	420 ss
A656-100	100mm	235mm	316L ss

## Tablet Counting Triangle (316L ss)



- Quick and easy way to count round tablets
- Suitable for all sizes of round tablets
- 316L stainless steel or PS shatter-proof plastic
- Easily used by right handed and left handed people
- Etched with a guide to show the number of tablets in the tray



### Re-usable

Part No.	Side length	Height	Sterile	Material	Quantity per Pack
A356-160	160mm	14mm	No	316L ss	1
A356-275	275mm	12mm	No	316L ss	1

### Disposable

Part No.	Side length	Height	Sterile	Material	Box Quantity
8066A-1	200mm	12mm	No	PS	30
8066S-1S	200mm	12mm	Yes	PS	30

## Instrument Trays



- Range of low profile stainless steel trays
- Available from stock
- Crevice free design
- High quality polished finish

Part No.	Length	Width	Depth	Material
A674-215	215mm	160mm	18mm	304 ss
A674-295	295mm	197mm	18mm	304 ss
A674-395	395mm	275mm	11mm	304 ss
A674-490	490mm	320mm	15mm	304 ss



## Over 1 Million Stock Items

At our state of the art warehouse we keep over 1 million items in stock. Stock is controlled by the latest software so we can ship 95% of orders on the day the order is placed.



## Deep Trays (316L ss)

New



Stainless steel Deep Trays are a durable and hygienic alternative to plastic trays. They are made from high quality 316L stainless steel and are designed for heavy duty use.

Deep Trays (316L ss) are used in pharmaceutical, chemical and food companies around the world.

- 316L stainless steel
- Highly polished
- Rounded corners for easy cleaning

Part No.	Length	Width	Height	Material
A236-250	252mm	177mm	50mm	316L ss
A236-350	380mm	280mm	54mm	316L ss
A236-400	434mm	327mm	66mm	316L ss
A236-500	535mm	330mm	95mm	316L ss

## Deep Trays



Deep Trays made from 304 stainless steel are an excellent general purpose range of trays. They are ideal for everything from mixing formulations to carrying waste.

- Range of sizes
- Available from stock
- Crevice free design
- High quality polished finish
- Durable

Part No.	Length	Width	Depth	Material
A684-223	223mm	155mm	43mm	304 ss
A684-240	240mm	160mm	50mm	304 ss
A684-310	310mm	197mm	47mm	304 ss
A684-340	340mm	210mm	62mm	304 ss

## Shallow Trays



- All purpose shallow tray
- Crevice free
- 304 stainless steel construction
- Bright Polish

Part No.	Length	Width	Depth	Material
A224-220	220mm	150mm	10mm	304 ss
A224-290	290mm	210mm	10mm	304 ss

## Stainless Steel Beaker Tongs



New

Stainless Steel Beaker Tongs are ideal for picking up beakers, bottles etc. They are made from 304 stainless steel and have the option of a PVC grip. Beaker Tongs can be used to pick up both hot or cold items. They are suitable for production and laboratory work.

Part No.	Description	Length	Material
A621-260	Beaker Tongs	260mm	304 ss
A622-310	Non-slip Beaker Tongs	310mm	304 ss & PVC

## Stainless Steel Flask Tongs



New

The Sampling Systems Flask Tongs are ideal for picking up glass and plastic flasks. The special grip securely fits around the neck of the flask allowing it to be safely lifted. They can be used to pick up hot or cold items. Ideal for production and laboratory work.

Part No.	Length	Material
A623-220	220mm	304 ss

## Stainless Steel Tongs



New

Effortlessly pickup and manoeuvre items with our hygienic tongs. The all 304 stainless steel construction means they are suitable for hygienic applications.

Part No.	Length	Material
A144-160	160mm	304 ss
A144-230	230mm	304 ss
A144-390	390mm	304 ss

## Test Tube Rack



New

Test Tube Racks are made from corrosion stainless steel. They are ideal for use in laboratories and production.

The racks are finished to a mirror polish and can be easily cleaned. The stainless steel design means they are ideal for GMP applications.

- All stainless steel construction
- 2 sizes available

Part No.	Capacity	Length	Width	Hole Diameter	Material
A645-12	12 Test Tubes	152mm	58mm	19mm	Stainless steel
A645-48	48 Test Tubes	302mm	100mm	19mm	Stainless steel

## Straight Forceps (316L ss)



New

Straight Forceps (tweezers) are designed to make it easy to pick up intricate items such as samples, tissue, vials etc. They are manufactured from top grade 316L stainless steel. They come in a range of sizes from 100mm to 300mm and are available from stock.

Our forceps are designed to be used in laboratory, production and industrial environments.

Part No.	Length	Blade Length	Material
A596-100	100mm	90mm	316L ss
A596-200	200mm	180mm	316L ss
A596-300	300mm	240mm	316L ss
A596-400	400mm	340mm	316L ss

## Tweezers (Forceps)



- Polished finish
- Range of sizes
- 304 stainless steel

Part No.	Length	Blade Length	Material
A394-100	100mm	70mm	304 ss
A394-200	200mm	155mm	304 ss
A394-300	300mm	240mm	304 ss

## Angled Forceps (316L ss)



New

Angled Forceps (Tweezers) make it easy to pick up small items such as tablets, tissue samples, vials etc. They are manufactured from stainless steel and they come in a range of sizes from 100mm to 300mm.

Our forceps are designed to be used in laboratory, production and industrial environments.



Part No.	Length	Material
A976-100	100mm	316L ss
A976-200	200mm	316L ss
A976-300	300mm	316L ss
A854-100	100mm	Stainless Steel
A854-150	150mm	Stainless Steel
A854-200	200mm	Stainless Steel

## Sieving Tool (316L ss)

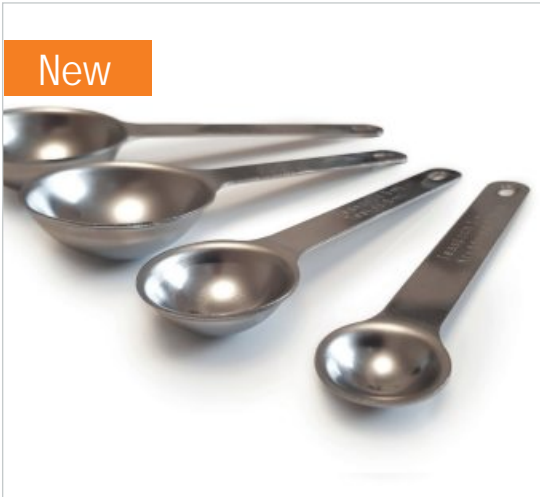


- Ideal for pushing powders through mesh screens
- 316L stainless steel
- Rounded corners
- Crevice free construction
- Bright Polish

Part No.	Disc Diameter	Handle Length	Material
A516-120	120mm	160mm	316L ss

Dosing and Volumetric Spoon

Volume 1.25ml to 100ml



Dosing and Volumetric Spoons are ideal for measuring powders and liquids. The range is available in a variety of sizes 1,25ml, 5ml, 15ml, 20ml and 100ml. The 5ml spoon is the same size as 1 teaspoon.

The spoons are made from high quality 304 stainless steel which means they have good chemical resistance.

Part No.	Volume	Bowl Diameter	Overall Length	Material
A335-012	1.25ml	23mm	106mm	304 ss
A335-050	5ml	33mm	112mm	304 ss
A335-150	15ml	47mm	119mm	304 ss
A335-200	20ml	51mm	141mm	304 ss
A335-1000	100ml	79mm	127mm	304 ss

Volumetric Spoon Set

Volume 1.25ml to 100ml



- Crevice free
- Satin finish
- Supplied as a set
- Each spoon is engraved with volume

Part No.	Volume	Bowl Diameter	Overall Length	Material
A335-1	1.25ml	23mm	107mm	304 ss
	5ml	33mm	112mm	
	15ml	46mm	118mm	
	100ml	79mm	127mm	

Note: Volumetric Spoons are not certified measuring devices

Measuring Scoop (316Lss)

Volume 1ml to 25ml



Accurately Measure Powders with our high quality Stainless Steel Measuring Scoops

The Sampling Systems Measuring scoop is ideal for scooping out fixed volumes of powder and liquid. These Measuring Scoops are made from high quality 316L stainless steel. The scoop bowls are accurately machined from solid stainless steel so there are no unhygienic crevices. Measuring Scoops are highly polished and are available in a range of sizes.

Part No.	Volume	Length	Diameter	Material
1900A-01	1ml	186mm	9mm	316L ss
1900A-03	3ml	186mm	17mm	316L ss
1900A-05	5ml	193mm	22mm	316L ss
1900A-10	10ml	193mm	22mm	316L ss
1900A-25	25ml	185mm	40mm	316L ss

## Scissors

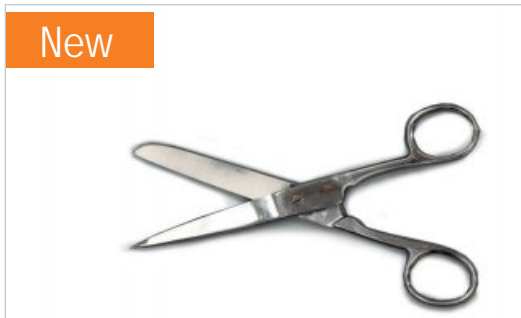


- Two pointed blades
- Polished finish
- Range of sizes
- 420 stainless steel

Part No.	Overall Length	Blade Length	Material
A364-150	150mm	45mm	420 ss
A364-200	200mm	100mm	420 ss
A364-300	300mm	200mm	420 ss

## Rounded Scissors

New



- One rounded blade and one pointed blade
- Polished finish
- 420 stainless steel

Part No.	Overall Length	Blade Length	Material
A555-150	150mm	70mm	420 ss

## Double Rounded Scissors

New



- Two rounded blades
- Polished finish
- Stainless steel

Part No.	Overall Length	Blade Length	Material
A552-150	150mm	55mm	Stainless steel

## Needle

New



- Available with straight or curved needles
- Crevice free construction
- Made from 304 stainless steel



Part No.	Needle Type	Overall Length	Needle Length	Material
A638-140	Straight	147mm	40mm	304 ss
A640-140	Curved	145mm	40mm	304 ss



Open PharmaScoops are a popular alternative to our best selling PharmaScoops. Open PharmaScoops are designed to be easy to clean due to their crevice free design. They have a broad ergonomic handle which makes them comfortable to use even when wearing gloves.

Huge stocks for fast worldwide delivery.

- Heavy duty construction
- 316L stainless steel
- Crevice free
- Bright Polish
- Rounded corners for easy cleaning
- GMP correct



Part No.	Nominal Capacity	Width	Body Length	Overall Length	Material
A336-250	250ml	100mm	160mm	280mm	316L ss
A336-500	500ml	100mm	195mm	310mm	316L ss
A336-750	750ml	125mm	205mm	320mm	316L ss
A336-1000	1000ml	130mm	270mm	390mm	316L ss
A336-1500	1500ml	150mm	235mm	350mm	316L ss
A336-2000	2000ml	155mm	290mm	410mm	316L ss
A336-4000	4000ml	205mm	310mm	430mm	316L ss

# PharmaScoops® (316L ss)

Capacity 10ml to 5000ml



PharmaScoops are high quality stainless steel scoops. They are ideal for dispensing and for sampling.

- High quality scoops
- Heavy duty construction
- 316L stainless steel
- Crevice free
- Bright Polish
- Rounded corners for easy cleaning
- GMP correct



PharmaScoops are a worldwide best seller in the pharmaceutical, food and chemical industries.

Part No.	Nominal Capacity	Body Diameter	Body Length	Overall Length	Material
A316-10	10ml	25mm	45mm	75mm	316L ss
A316-50	50ml	38mm	70mm	110mm	316L ss
A316-100	100ml	50mm	100mm	180mm	316L ss
A316-250	250ml	75mm	120mm	235mm	316L ss
A316-500	500ml	95mm	140mm	240mm	316L ss
A316-750	750ml	95mm	210mm	330mm	316L ss
A316-1000	1000ml	110mm	235mm	340mm	316L ss
A316-1250	1250ml	125mm	195mm	305mm	316L ss
A316-1700	1700ml	135mm	230mm	355mm	316L ss
A316-2500	2500ml	185mm	215mm	320mm	316L ss
A316-5000	5000ml	220mm	230mm	355mm	316L ss

## Scorpion PharmaScoops® (316L ss)

Capacity 1500ml to 2000ml



- Heavy duty construction
- 316L stainless steel
- Hygienic crevice free construction
- Bright Polish
- Rounded corners for easy cleaning

Part No.	Nominal Capacity	Body Width	Body Length	Overall Height
A346-1500	1500ml	155mm	260mm	130mm
A346-2000	2000ml	165mm	300mm	150mm

## Long Handled PharmaScoops® (316L ss)

Capacity 10ml to 1000ml

New sizes



- Extra Long handle
- Crevice free
- 316L stainless steel construction
- Rounded corners for easy cleaning
- GMP correct

Part No.	Nominal Capacity	Body Diameter	Body Length	Handle Length
A396-10	10ml	25mm	42mm	300mm
A396-50	50ml	38mm	70mm	300mm
A396-100	100ml	50mm	100mm	300mm
A396-500	500ml	95mm	140mm	600mm
A396-1000	1000ml	110mm	235mm	600mm

## Weighing PharmaScoops® (316L ss)

Capacity 500ml



- Free-standing scoop, ideal for use with weighing scales
- 316L stainless steel
- Rounded corners
- Crevice free construction
- Bright Polish
- Robust handle

Part No.	Nominal Capacity	Maximum Width	Body Length	Overall Length
A376-500	500ml	110mm	205mm	320mm

## Square PharmaScoops® (316L ss)

Capacity 1500ml



- Scoop with flat base
- Heavy duty construction
- Made from 316L stainless steel
- Crevice free
- Bright Polish
- Rounded corners for easy cleaning
- GMP correct

Part No.	Nominal Capacity	Width	Body Length	Overall Length
A366-1	1500ml	160mm	190mm	315mm



## PTFE Scoops

Capacity 100ml to 500ml



- Crevice free
- PTFE construction (FDA acceptable and USP Class VI)
- Rounded corners for easy cleaning
- GMP correct

Part No.	Nominal Capacity	Body Diameter	Body Length	Overall Length
A333-100	100ml	65mm	95mm	195mm
A333-500	500ml	100mm	140mm	265mm

## Industrial Scoops

Capacity 100ml to 1000ml



- Light duty construction
- Stainless steel
- Fully welded

New sizes

Part No.	Nominal Capacity	Body Width	Body Length	Overall Length
A643-100	100ml	65mm	117mm	205mm
A643-200	200ml	85mm	140mm	225mm
A643-300	300ml	90mm	170mm	275mm
A643-500	500ml	105mm	185mm	290mm
A643-1000	1000ml	125mm	200mm	302mm

## Economy Scoops

Capacity 120ml to 2000ml



- Light duty construction
- 304 stainless steel

**Important Note** - Economy Scoops are not crevice free and are therefore not suitable for GMP applications

Part No.	Nominal Capacity	Diameter	Overall Length
A304-120	120ml	50mm	195mm
A304-450	450ml	75mm	255mm
A304-1000	1000ml	120mm	315mm
A304-1500	1500ml	120mm	345mm
A304-2000	2000ml	150mm	365mm

## Ice Scoops

Capacity 100ml

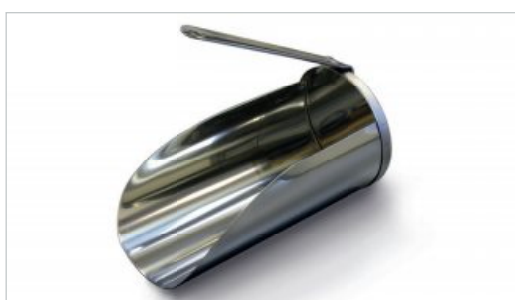


- Perforated to allow excess water to flow away
- 304 stainless steel

Part No.	Nominal Capacity	Body Diameter	Body Length	Overall Length
A314-100	100ml	50mm	100mm	180mm

## Scorpion Scoop Eco

Capacity 1000ml



- 304 stainless steel
- Satin finish
- Suitable for general, light duty use

Part No.	Nominal Capacity	Body Width	Body Length	Overall Height
A334-1000	1000ml	120mm	230mm	200mm

## Filling Scoop (316L ss)

Capacity 750ml

New



The Filling Scoop can be used to fill bags and bottles directly through the handle of the scoop. The scoop has a special rounded funnel shape to help the material flow through the handle. This Filling Scoop is suitable for use with most free flowing powders and granules.

- Empty scoop through the handle
- Heavy duty construction
- 316L stainless steel
- Hygienic crevice free construction
- Bright Polish
- Rounded corners for easy cleaning

Part No.	Nominal Capacity	Width	Body Length	Overall Length
A436-750	750ml	101mm	183mm	313mm

## GMP PharmaScoop® (316L ss)

Capacity 750ml to 5000ml

New



GMP PharmaScoops are suitable for the most demanding of applications. The fully radiused body ensures they are easy to clean and minimises the risk of cross contamination.

For extra heavy duty work the GMP PharmaScoop is available with an optional Top Handle to improve the ergonomics.

- Heavy duty construction
- 316L stainless steel
- Hygienic crevice free construction
- Bright Polish
- Optional Top Handle
- Rounded corners for easy cleaning



Part No.	Nominal Capacity	Top Handle	Body Diameter	Body Length	Overall Length	Material
A606-750	750ml	No	98mm	180mm	333mm	316L ss
A606-1500	1500ml	No	125mm	210mm	365mm	316L ss
A606-3000	3000ml	No	160mm	270mm	420mm	316L ss
A606-5000	5000ml	No	195mm	350mm	500mm	316L ss
A776-3000	3000ml	Yes	160mm	270mm	420mm	316L ss
A776-5000	5000ml	Yes	195mm	350mm	500mm	316L ss



SteriWare PharmaScoops are high quality, single use, disposable plastic scoops. All SteriWare PharmaScoops are manufactured and packed in a cleanroom. They are widely used in the pharmaceutical and food industries all over the world.

SteriWare PharmaScoops are ideal for use with potent drugs as well as highly coloured or perfumed products.

- Manufactured and packed in a medical cleanroom to ensure cleanliness
- Individually wrapped
- Made from tough, virgin polymers (FDA acceptable, EU 10/2011 and EC 1935/2004)
- Available non-sterile or sterile (validated procedure using gamma irradiation)
- Ergonomic design
- GMP correct
- Available from stock

Part No.	Nominal Capacity	Sterile	Colour	Material	Box Quantity
8045A-30	30ml	No	White	PS	100
8045A-30S	30ml	Yes	White	PS	100
8045A-60	60ml	No	White	PS	100
8045A-60S	60ml	Yes	White	PS	100
8045A-125	125ml	No	White	PS	100
8045A-125S	125ml	Yes	White	PS	100
8045A-250	250ml	No	White	PS	85
8045A-250S	250ml	Yes	White	PS	85
8045A-500	500ml	No	White	PS	50
8045A-500S	500ml	Yes	White	PS	50
8045A-1000	1000ml	No	White	PS	25
8045A-1000S	1000ml	Yes	White	PS	25
8045A-2500	2500ml	No	White	PS	15
8045A-2500S	2500ml	Yes	White	PS	15
8045R-60	60ml	No	Red	PS	100
8045R-60S	60ml	Yes	Red	PS	100
8045R-500S	500ml	Yes	Red	PS	50
8045R-1000	1000ml	No	Red	PS	25
8045R-1000S	1000ml	Yes	Red	PS	25
8045R-2500S	2500ml	Yes	Red	PS	15
8045P-500	500ml	No	White	PP	50
8045P-1000	1000ml	No	White	PP	25
8045B-60	60ml	No	Blue	PP	100
8045B-60S	60ml	Yes	Blue	PP	100
8045B-125S	125ml	Yes	Blue	PP	100

Visit [www.sampling.com](http://www.sampling.com) to see the full range

## Spoons & Spatulas Disposable & reusable



### SteriWare Sample Spoons

Volume 3ml to 10ml



- Single use spoons for sampling and dispensing small quantities
- Moulded & Packed in a Cleanroom
- Individually Bagged, 100 per Box
- Made from FDA & EU 10/2011 Conforming Materials
- BSE/TSE Free
- Full Batch Traceability

Part No.	Nominal Volume	Colour	Sterile	Box Quantity
8088A-03	3ml	White	No	100
8088A-03S	3ml	White	Yes	100
8088A-10	10ml	White	No	100
8088A-10S	10ml	White	Yes	100
8088B-10	10ml	Blue	No	100
8088B-10S	10ml	Blue	Yes	100
8088R-10S	10ml	Red	Yes	100

### Micro Spoon



- Ergonomic spoon
- Crevice free construction
- Made from 304 stainless steel

Part No.	Length	Bowl Width	Material
A634-150	150mm	5mm	304 ss
A634-200	210mm	5mm	304 ss

### Open Spoon



- Single ended stainless steel spoon
- Pouring lip on end of bowl
- Crevice free construction
- Made from 304 stainless steel

Part No.	Length	Max. Width	Material
A620-200	200mm	25mm	304 ss

## Stainless Spoons (304 or 316L ss)

Volume 2ml to 10ml



- Available in both 304 and 316L stainless steel
- Crevice free
- Bowl & flat ends
- Bright Polish

Part No.	Nominal Bowl Volume	Nominal Overall Length	Material
A506-300	10ml	300mm	316L ss
A506-600	10ml	600mm	316L ss
A506-1000	10ml	1000mm	316L ss
A504-1	2ml	155mm	304 ss
A504-2	10ml	210mm	304 ss
A504-3	2ml	300mm	304 ss
A504-4	10ml	305mm	304 ss
A504-5	10ml	500mm	304 ss

## Laboratory Spoon

Volume 2ml to 12ml

New



- Crevice free construction
- Made from 304 stainless steel

Part No.	Length	Nominal Volume	Material
A611-150	150mm	2ml	304 ss
A611-210	212mm	3ml	304 ss
A611-250	253mm	6ml	304 ss
A611-300	303mm	12ml	304 ss

## Double Ended Laboratory Spoon

Volume 1ml to 12ml

New



- Double ended stainless steel spoon (different volume at each end)
- Flat handle
- Crevice free construction
- Made from 304 stainless steel

Part No.	Length	Nominal Volume	Material
A612-150	150mm	1ml & 2ml	304 ss
A612-210	212mm	1ml & 3ml	304 ss
A612-250	253mm	4ml & 7ml	304 ss
A612-300	303mm	7ml & 12ml	304 ss

## Double Ended Spoon

Volume 0.5ml to 8ml

New



- Double ended stainless steel spoon (different volume at each end)
- Round handle
- Crevice free construction
- Made from stainless steel

Part No.	Length	Nominal Volumes	Material
A104-150	150mm	0.5ml & 2ml	Stainless steel
A104-180	180mm	0.8ml & 2.8ml	Stainless steel
A104-210	210mm	1.6ml & 3ml	Stainless steel
A104-250	250mm	1.8ml & 5ml	Stainless steel
A104-300	300mm	2ml & 8ml	Stainless steel

## Chattaway Spatula

New



- Ergonomic spatula
- Crevice free construction
- Made from 304 stainless steel

Part No.	Length	Max. Width	Material
A627-100	100mm	9mm	304 ss
A627-150	150mm	9mm	304 ss
A627-210	210mm	9mm	304 ss
A627-250	250mm	10mm	304 ss
A627-300	303mm	10mm	304 ss

## Micro Chattaway Spatula

New



- Ergonomic spatula
- Crevice free construction
- Made from 304 stainless steel

Part No.	Length	Max. Width	Material
A628-100	103mm	4mm	304 ss
A628-150	150mm	4mm	304 ss
A628-200	200mm	4mm	304 ss

## Narrow Spoon Spatula

New



- Ergonomic spatula
- Crevice free construction
- Made from 304 stainless steel

Part No.	Length	Nominal Volume	Material
A618-235	235mm	2ml	304 ss

## Chemical Spoon

Volume 5ml to 35ml

New



- Single bowl
- Flat handle
- Crevice free construction
- Made from 304 stainless steel

Part No.	Length	Nominal Volume	Material
A625-150	150mm	5ml	304 ss
A625-200	200mm	10ml	304 ss
A625-280	280mm	25ml	304 ss
A625-320	320mm	35ml	304 ss

## Curved Spatula

New

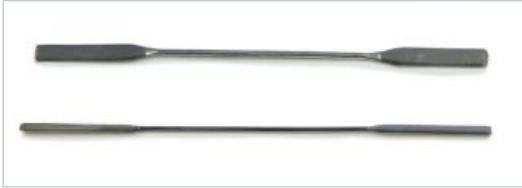


- Double ended spatula
- Crevice free construction
- Made from 304 stainless steel

Part No.	Length	Blade Width	Material
A630-120	120mm	15mm	304 ss
A630-210	210mm	25mm	304 ss

## Micro-Spatulas (304 & 316L ss)

New sizes



- 304 or 316L stainless steel
- Range of sizes
- Crevice free
- Bright polish finish



Part No.	Blade Width	Blade Length	Overall Length	Material
A100-1	9mm	50mm	210mm	304 ss
A100-2	5mm	45mm	210mm	304 ss
A100-3	2.5mm	35mm	150mm	304 ss
*A100-20	12mm	40mm	175mm	304 ss
*A106-20	12mm	40mm	175mm	316L ss

## Trulla Spatula

New



- Special curved spatula
- Crevice free construction
- Made from 304 stainless steel

Part No.	Length	Max. Width of Ends	Material
A614-175	177mm	23mm	304 ss

## Nuffield Spatula

New



- Ergonomic spatula
- Crevice free construction
- Made from 304 stainless steel

Part No.	Length	Max. Width of Ends	Material
A615-140	147mm	13mm	304 ss

## SteriWare Micro-Spatula

Volume 0.3ml to 2ml



- Moulded & Packed in a Cleanroom
- Individually Bagged, 100 per Box
- Made from FDA & EU 10/2011 Conforming Materials
- BSE/TSE Free
- Full Batch Traceability
- Available Sterile (gamma irradiated)

Part No.	Nominal Volume	Sterile	Blade Width x Length	Box Quantity
8015V-170	0.3ml	No	4 x 40mm	100
8015V-170S	0.3ml	Yes	4 x 40mm	100
8015N-170	0.5ml	No	6 x 40mm	100
8015N-170S	0.5ml	Yes	6 x 40mm	100
8015A-170	2ml	No	13 x 40mm	100
8015A-170S	2ml	Yes	13 x 40mm	100

See the full range of SteriWare products at [www.sampling.com](http://www.sampling.com)

## Flat Spatula

New



- Ergonomic spatula
- Crevice free construction
- Made from 304 stainless steel

Part No.	Length	Max. Width	Material
A631-120	120mm	21mm	304 ss
A631-210	210mm	25mm	304 ss

## Flat Laboratory Spatula

New



- Double ended stainless steel flat spatula
- Crevice free construction
- Made from 304 stainless steel

Part No.	Length	Max. Width	Material
A613-150	149mm	20mm	304 ss
A613-210	212mm	25mm	304 ss
A611-250	255mm	32mm	304 ss
A611-300	306mm	40mm	304 ss

## Pro Whisk Stainless Steel



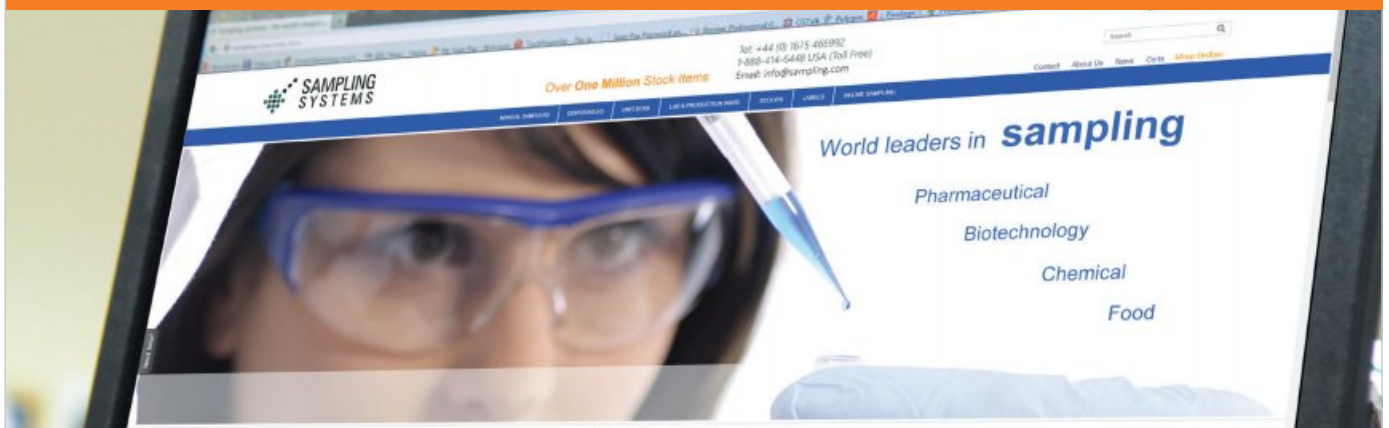
The stainless steel Pro Whisks are ideal for mixing liquids and creams. They come in a wide variety of sizes from 280mm to 550mm long. The whisks have an additional loop design that makes the mixing action more efficient.

A hook on the end allows them to be hung up after use.

Part No.	Length	Maximum Width	Material
A134-280	280mm	70mm	Stainless Steel
A134-350	350mm	85mm	Stainless Steel
A134-450	450mm	100mm	Stainless Steel
A134-550	550mm	90mm	Stainless Steel

## Web Site – For the Latest Products

Our web site is constantly being updated with the latest products. For more info please see [www.sampling.com](http://www.sampling.com)





## Bailers (316Lss)

Volume 1L to 4L



- Crevice free
- Bright Polish
- Flat cut rim on bowl
- 316L Stainless Steel

Part No.	Nominal Volume	Max. Bowl Diameter	Overall Length	Material
A296-1	1L	170mm	285mm	316L ss
A296-2	2L	215mm	340mm	316L ss
A296-4	4L	270mm	415mm	316L ss

## Bowls

Volume 1L to 4L



- Crevice free design
- Polished finish
- Range of sizes
- 304 Stainless Steel

Part No.	Nominal Volume	Diameter	Height	Material
A534-1000	1L	170mm	86mm	304 ss
A534-2000	2L	217mm	112mm	304 ss
A534-4000	4L	271mm	130mm	304 ss

## Medicine Cups

Volume 30ml



Medicine Cups are ideal for putting small amounts of tablets, granules or powder into. The flat base design means they are ideal for weigh scales.

- 304 stainless steel
- Crevice free
- Polished

Part No.	Nominal Volume	Diameter	Height	Material
A764-30	30ml	50mm	25mm	304 ss

## Shovel (316L ss)



Our stainless steel Shovels have a robust strong design. The sturdy handle is fully welded for added strength.

- 316L stainless steel
- Crevice free
- Polished

Part No.	Overall Length	Blade Width	Blade Length	Material
A246-10	1155mm	235mm	355mm	316L ss

StainlessWare



# Introducing SteriWare ULTRA

SteriWare ULTRA is the new premium range from Sampling Systems. All of the products in the SteriWare ULTRA range are made from HDPE that conforms to USP Class VI and USP 661. All SteriWare ULTRA products are double bagged as standard.

All SteriWare ULTRA products are Cleanroom manufactured, sterilised by gamma, have a 5 year shelf life and come with full documentation.

**USP Class VI  
Double Bagged  
Available from stock**



Contact us for further information & prices

# Index

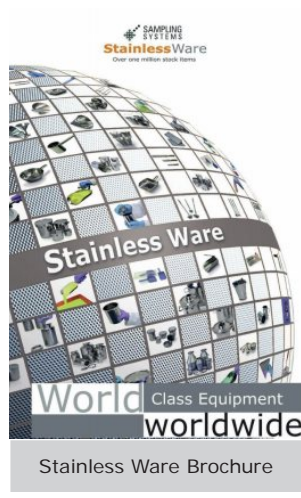
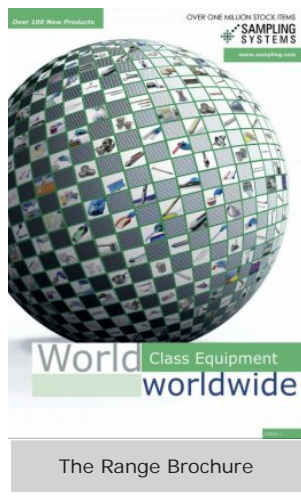
Product Description	Page
Bailers	41
Bowls	41
Buckets	17
Containers (7ml to 100L)	4-9
Dippers	21
Drums (1L to 300L)	10-15
Forceps	27
Funnels	18-20
Jacketed Containers (3L to 50L)	8
Jugs	16
Ladles	21
Measuring Scoops	28
Medicine Cups	41
Needles	29
Paddles	20
Pallet Knives	23
Scissors	29
Scoops	30-35
Scrapers	23
Sieving Tool	27
Shovel	41
Spatulas	38-40
Spoons	36-37
Tablet Counting Trays	24
Test Tube Rack	26
Tongs	26
Trays	24-25
Trolleys	13
Tweezers	27
Volumetric Scoops	28
Whisk	40

Part Number	Page	Part Number	Page
1900	28	A446	14
5005	21	A454	15
8015	39	A466	15
8045	35	A504	37
8066	24	A506	37
8088	36	A516	27
8111	18	A534	41
8175	22	A552	29
8370	19	A555	29
8785	22	A566	7
A100	39	A586	17
A104	37	A596	27
A106	39	A606	34
A126	11	A611	37
A134	40	A612	37
A136	12	A613	40
A144	26	A614	39
A154	16	A615	39
A164	20	A618	38
A196	12	A620	36
A200	23	A621	26
A201	23	A622	26
A204	16	A623	26
A224	25	A624	14
A236	25	A625	38
A244	19	A626	14
A246	41	A627	38
A264	17	A628	38
A266	13	A630	38
A284	8	A631	40
A296	41	A634	36
A304	33	A638	29
A314	33	A640	29
A316	31	A643	33
A324	21	A645	26
A326	21	A656	23
A330	23	A674	24
A333	33	A684	25
A334	20	A686	17
A335	28	A694	15
A336	30	A696	15
A344	20	A716	18
A346	32	A736	8
A350	23	A746	8
A356	24	A764	41
A364	29	A776	34
A366	32	A826	17
A376	32	A836	5
A384	13	A846	7
A394	27	A854	27
A396	32	A856	5
A406	16	A904	20
A416	5	A916	20
A417	6	A926	10
A418	6	A976	27
A426	9	A986	19
A434	14	A996	21
A436	34		



Available for Download  
from [www.sampling.com](http://www.sampling.com)

New



📍 **Via Torre, 2**  
📍 **28040 Borgo Ticino (NO) - Italy**  
☎ **+39 0321 908466**  
✉ **customer care@exonder.it**  
🌐 **<https://www.exonder.it>**



Sampling Systems Ltd.  
4 & 5 Forge Mills Park,  
Coleshill,  
Warwickshire,  
B46 1JH  
UK

[www.sampling.com](http://www.sampling.com)  
Tel: +44 (0)1675 466992  
Email: [info@sampling.com](mailto:info@sampling.com)

'SteriWare', 'PharmaScoop' and 'PharmaBottle' are registered Trade Marks belonging to Sampling Systems Ltd.

All goods are sold subject to our normal Terms & Conditions. Contact us for a copy.

©2022 all rights reserved

